

# Presenter



**Robin Pfohman**  
Program Manager  
Community Resilience + Equity  
Public Health – Seattle & King County



Robin Pfohman | Public Health – Seattle & King County

# CLIMATE CHANGE AND PUBLIC HEALTH: OPPORTUNITIES TO PROMOTE EQUITY

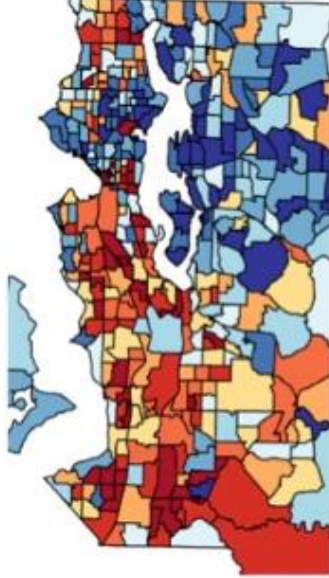


- ✓ Climate change
- ✓ Race, equity and social justice

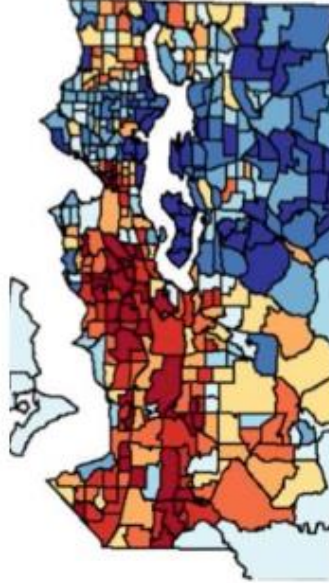
# KING COUNTY, WA

# KING COUNTY HEALTH AND WELL-BEING MEASURES

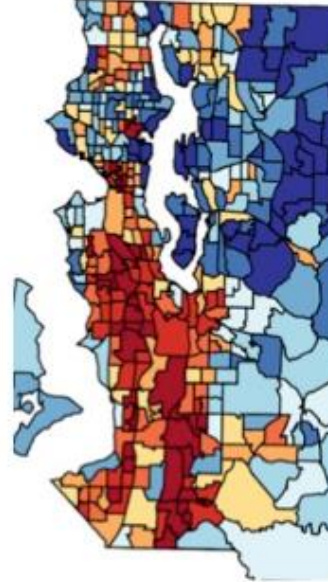
Life Expectancy



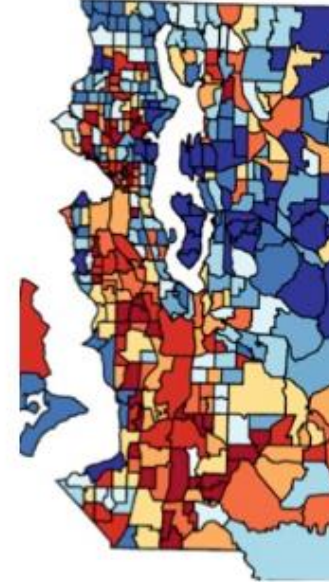
Tobacco Use



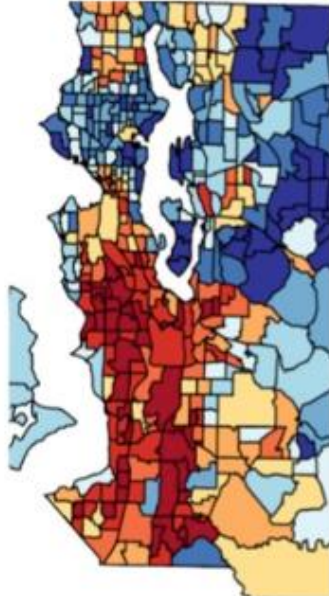
Frequent Mental Distress



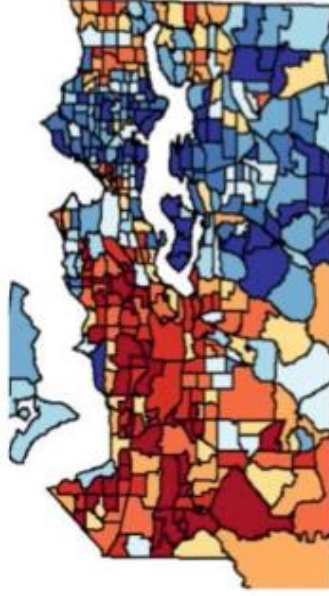
Adverse Childhood Experiences



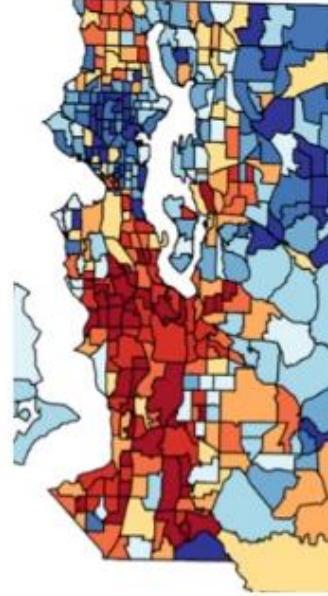
Lack of Physical Activity



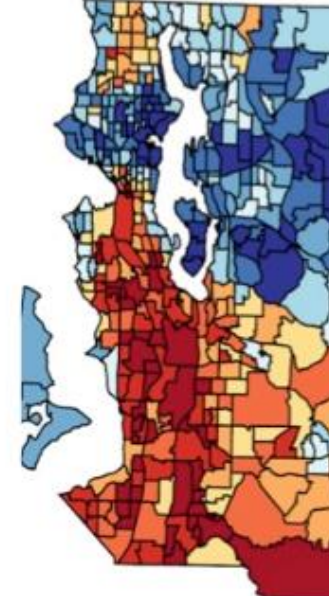
Obesity



Diabetes

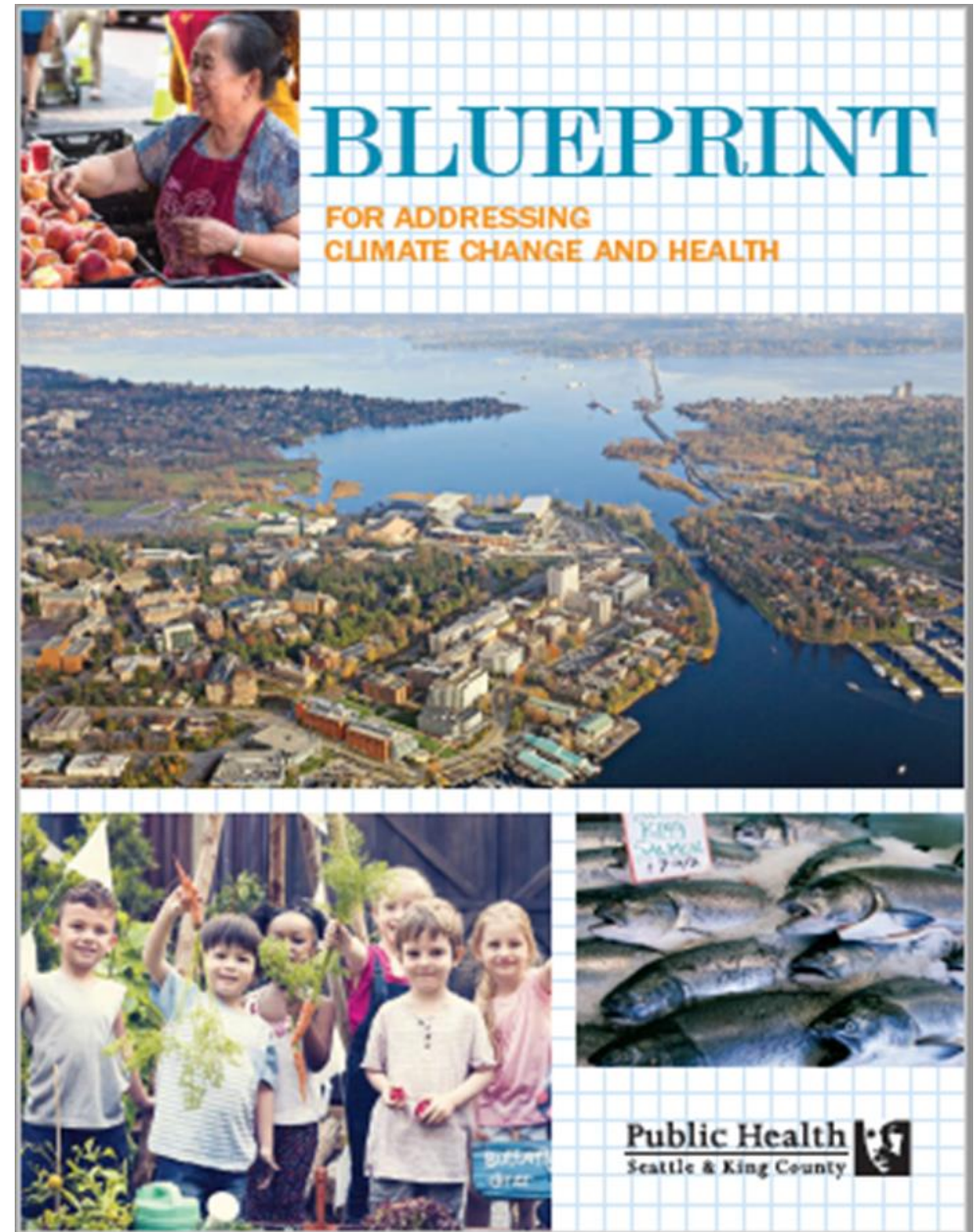


Preventable Hospitalization



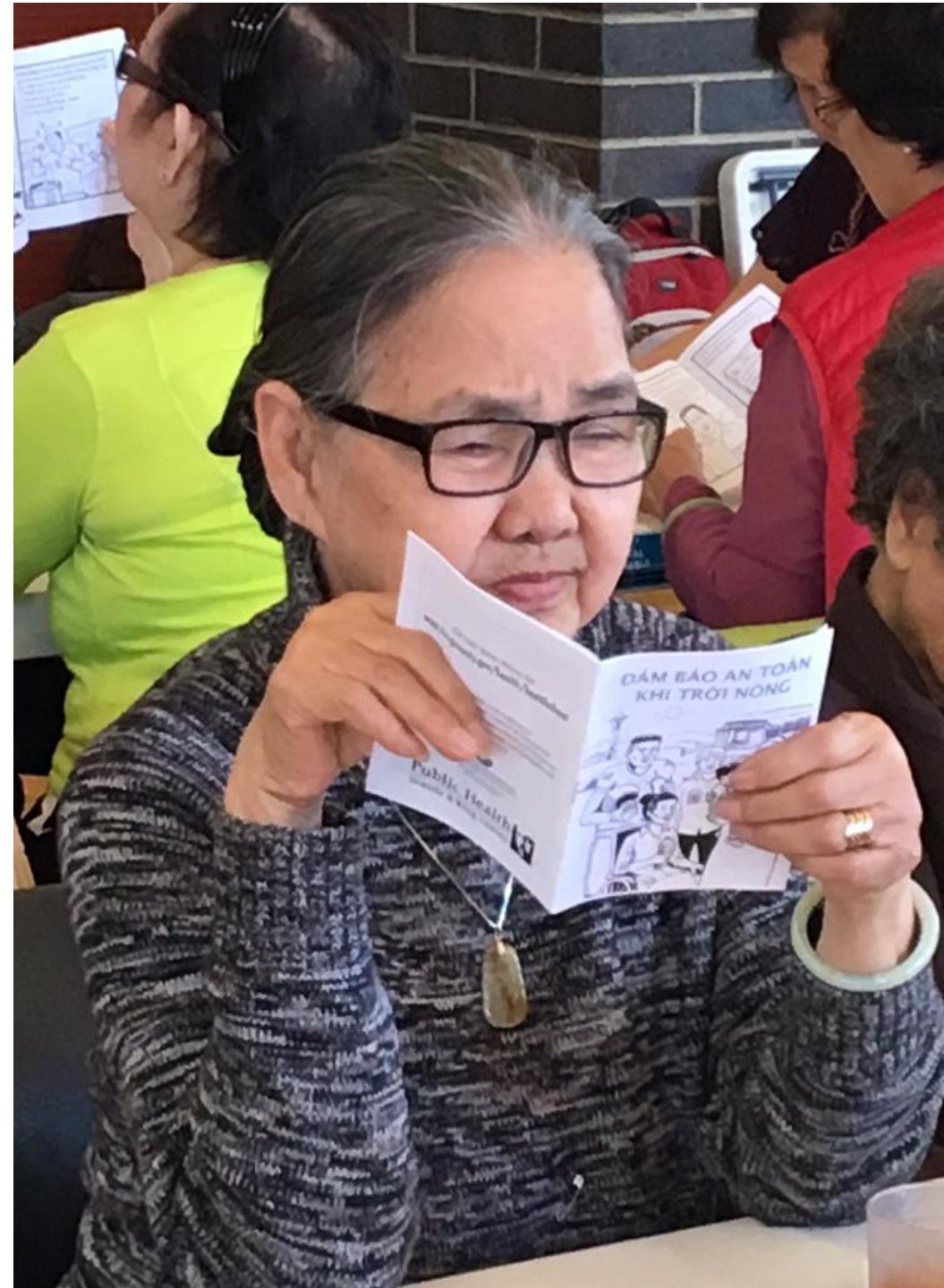
# Public Health – Seattle & King County

- Health in All Policies approach
- Role of public health in climate change planning
- Establishes path forward with core functions and recommended action
- Builds a case for needed funding



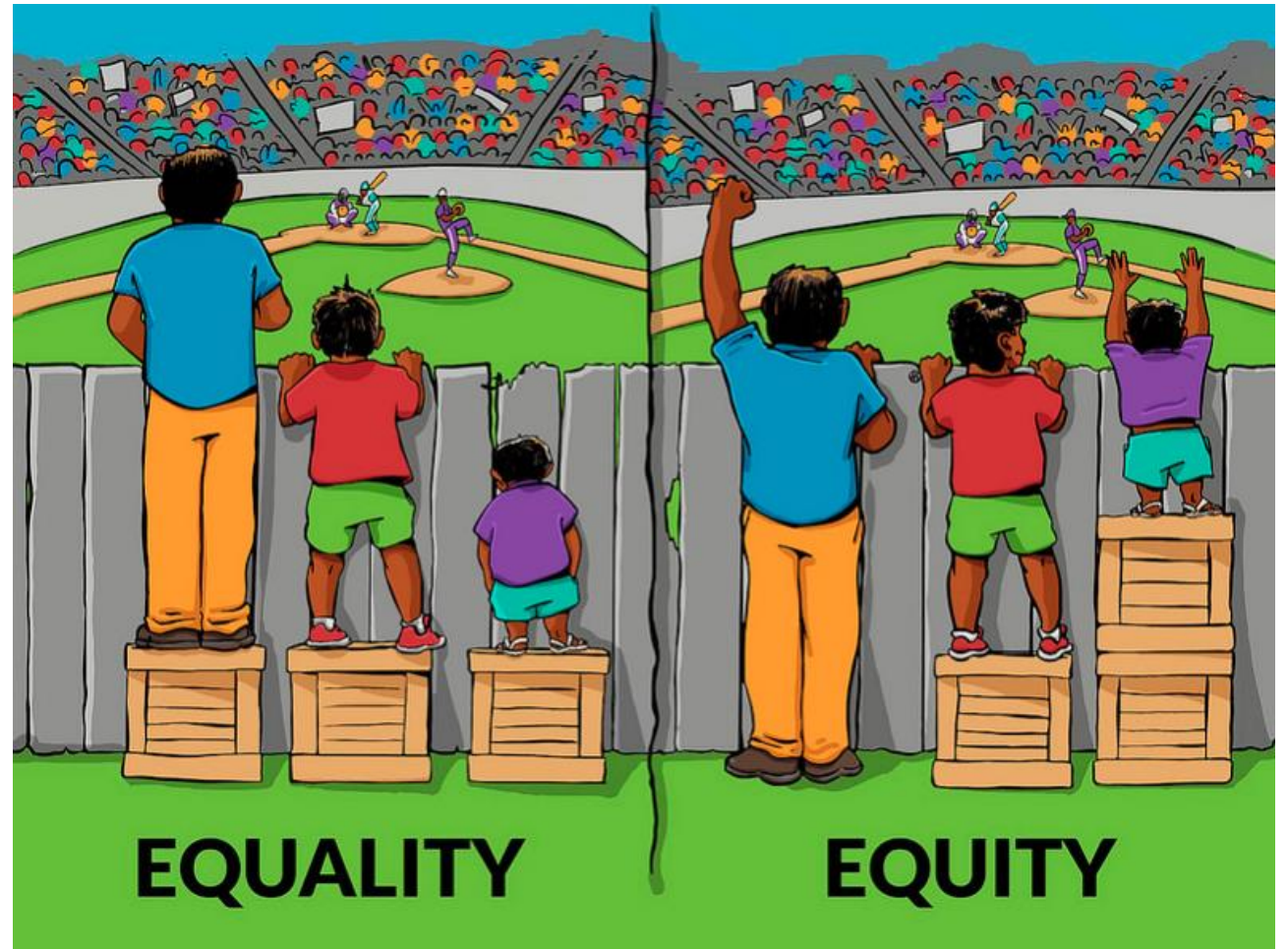
# Guiding Principles

- Lead with environmental justice and racial equity
- Promote a Health in All Policies approach
- Use systems-thinking
- Engage community in an inclusive, equitable way



# Adopt broad approach to resilience

- Resilience will not be achieved without addressing racial inequities in our communities
- Opportunity to remediate historical injustice
- Local public health can help frame the conversation



# Center people and communities

- Impacts are embedded in communities
- Expected health impacts:
  - immediate and urgent
  - capable of mobilizing public and policy makers
  - Magnify existing inequities





# Seek climate justice partners

- Existing health burdens and risks are intensified because of climate impacts
  - Air quality
  - Exposure to toxics
- Climate impacts disproportionately affect people of color and low-income communities
  - Food price increases and swings
  - Heat waves and the urban heat island effect



# Case Study: Preventing heat related illness

**Stay Safe in the Heat**



## 在炎熱的天氣中保證安全



更多資訊請訪問: [www.kingcounty.gov/beattheheat](http://www.kingcounty.gov/beattheheat)

Made possible with funding by the Centers for Disease Control & Prevention, Office of Public Health Preparedness and Response, and University of Washington Department of Environmental and Occupational Health Sciences



DEPARTMENT OF ENVIRONMENTAL  
& OCCUPATIONAL HEALTH SCIENCES  
UNIVERSITY OF WASHINGTON  
School of Public Health

Public Health  
Seattle & King County

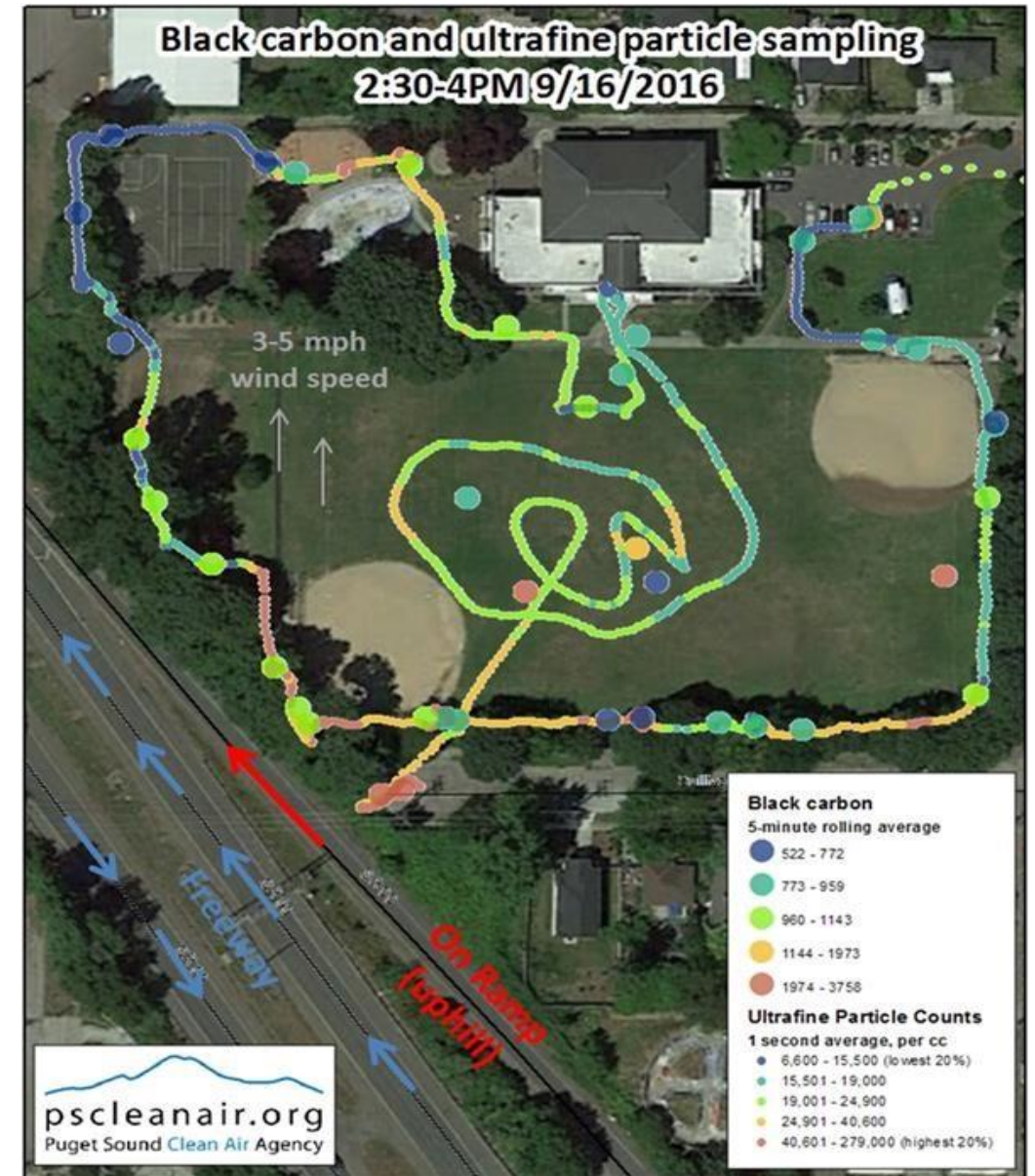
# Case Study: The Community Health Board Coalition



# Case Study: Health Impact Assessment



SME Panel Site Visit on September 19, 2016



# Thank You!

[Robin.Pfohman@kingcounty.gov](mailto:Robin.Pfohman@kingcounty.gov)