



AMERICAN PUBLIC HEALTH ASSOCIATION  
*For science. For action. For health.*

**ATSDR**  
AGENCY FOR TOXIC SUBSTANCES  
AND DISEASE REGISTRY



A Five-part Webinar Series

# SAFEGUARDING COMMUNITIES FROM HARMFUL CHEMICALS

# SAFEGUARDING COMMUNITIES FROM HARMFUL CHEMICALS

## Part 2: *Supporting Communities with Tools and Resources*



# Welcome



**Swannie Jett, DrPH, MSc**

Health Officer

Florida Department of Health in Seminole  
County

Incoming President

NACCHO

## Engaging Local Health Officials

Environmental  
Justice

Policy  
Statements

Issue Briefs

National Conversation on Public  
Health and Chemical Exposures

Health in all  
Policies

Environmental Health Committee



# ATSDR's Perspective



**Lora Werner**  
Regional Director  
ATSDR Region 3 Office

# Supporting Communities with Tools and Resources

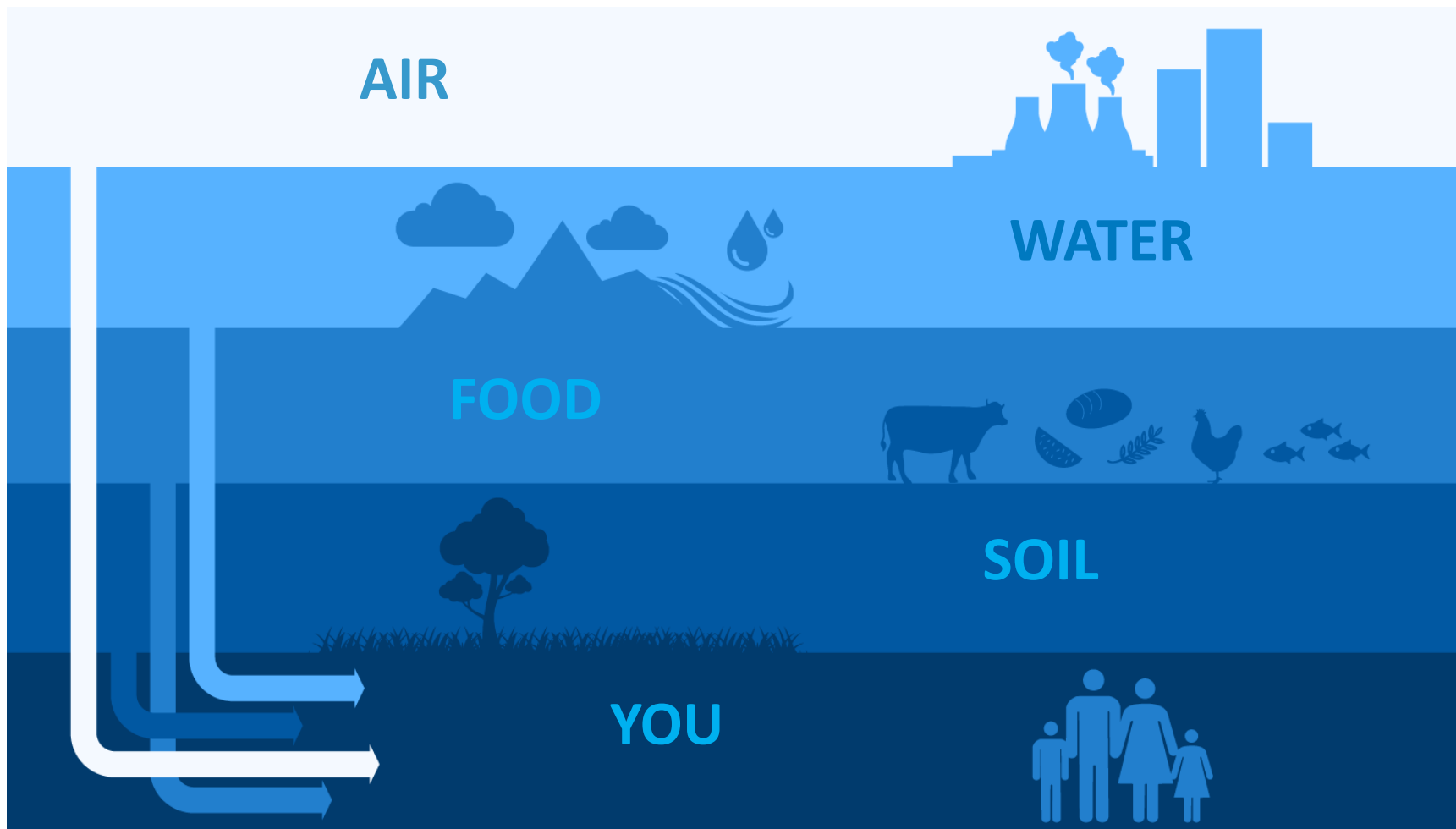
## ATSDR 101: An Overview of ATSDR's Work in Communities



# Serving Americans, Community by Community ATSDR's 30 Year History

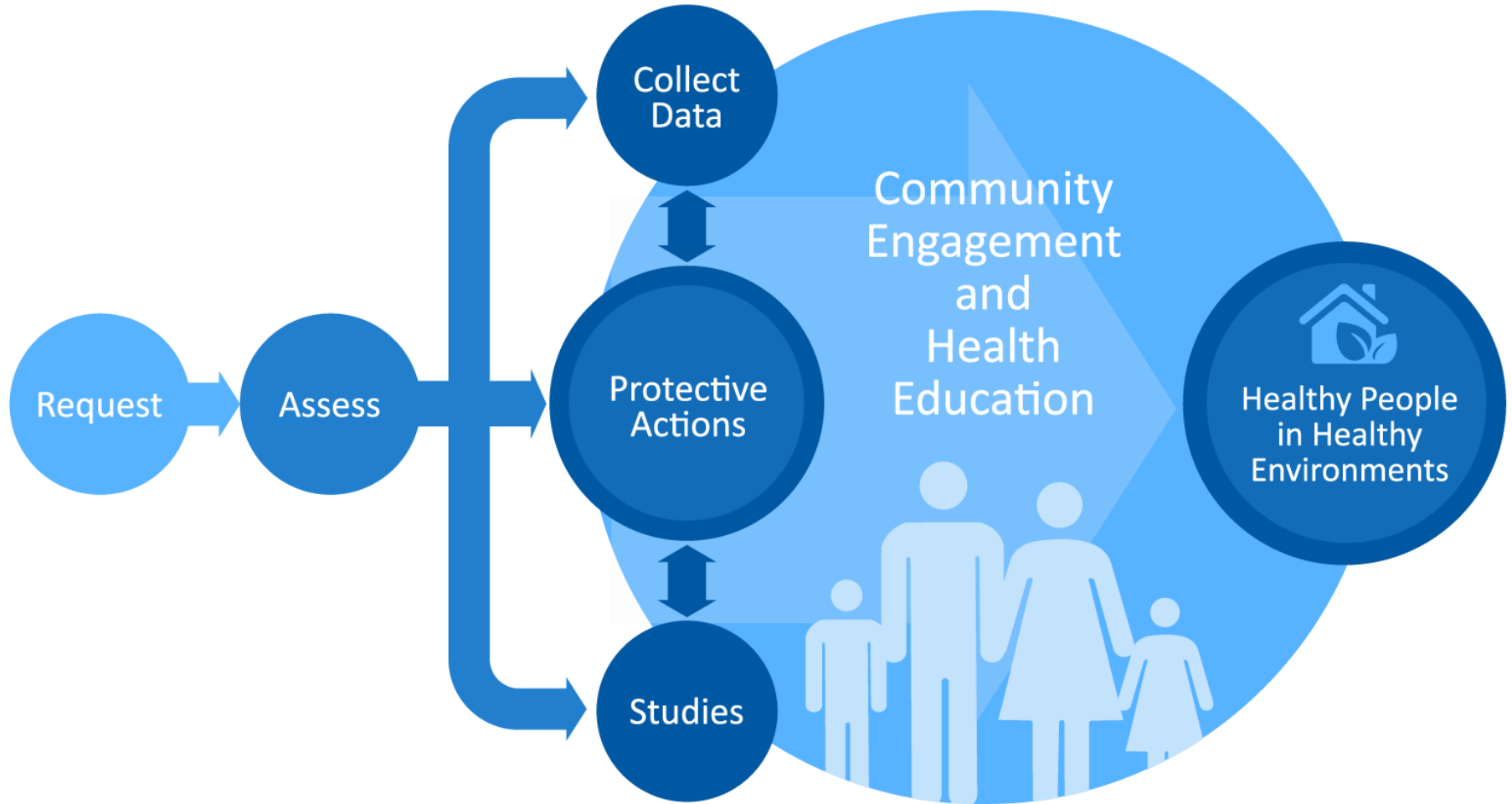


# ATSDR's Core Work in Communities: Understanding Exposures

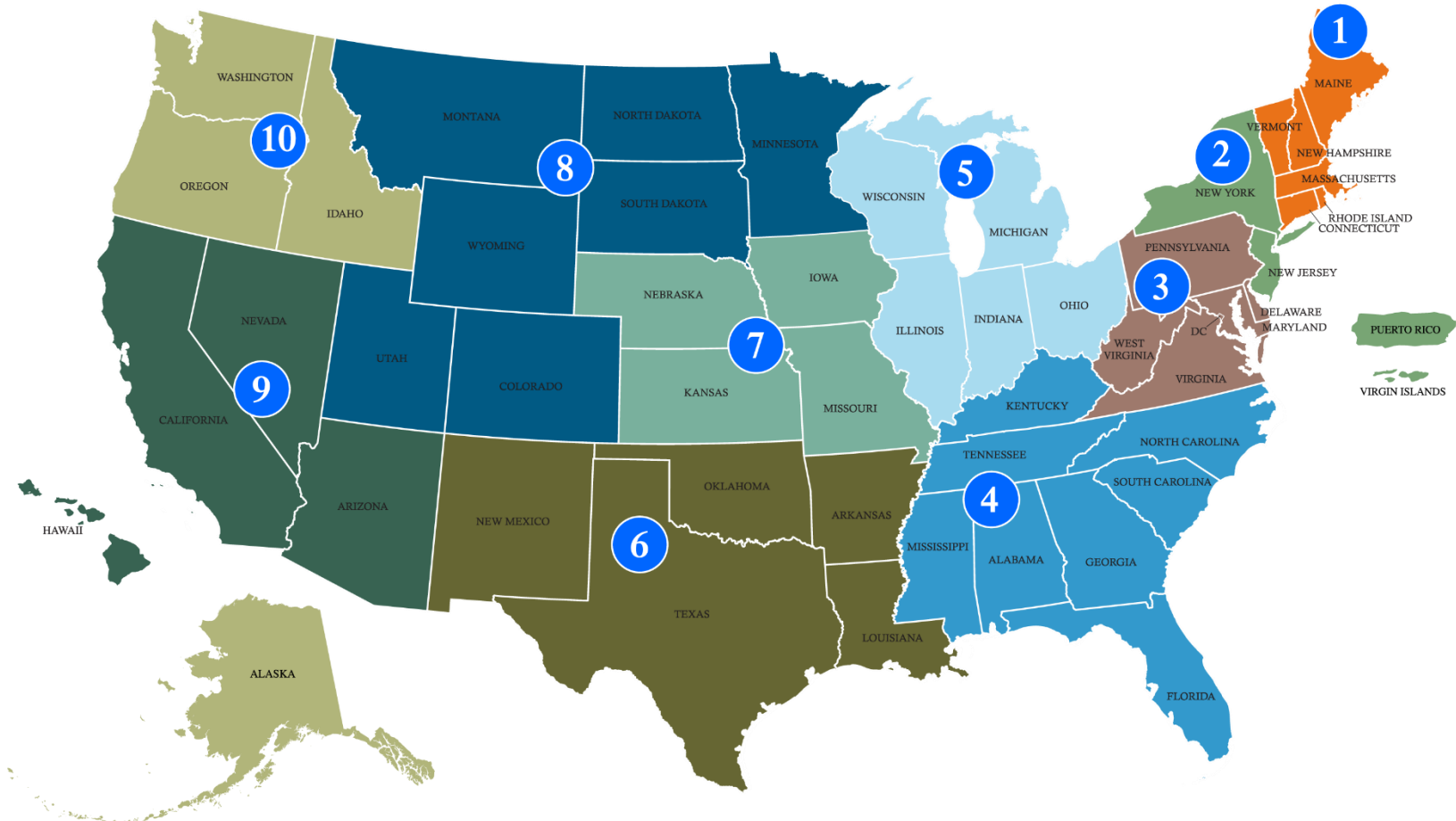




# Protecting Communities

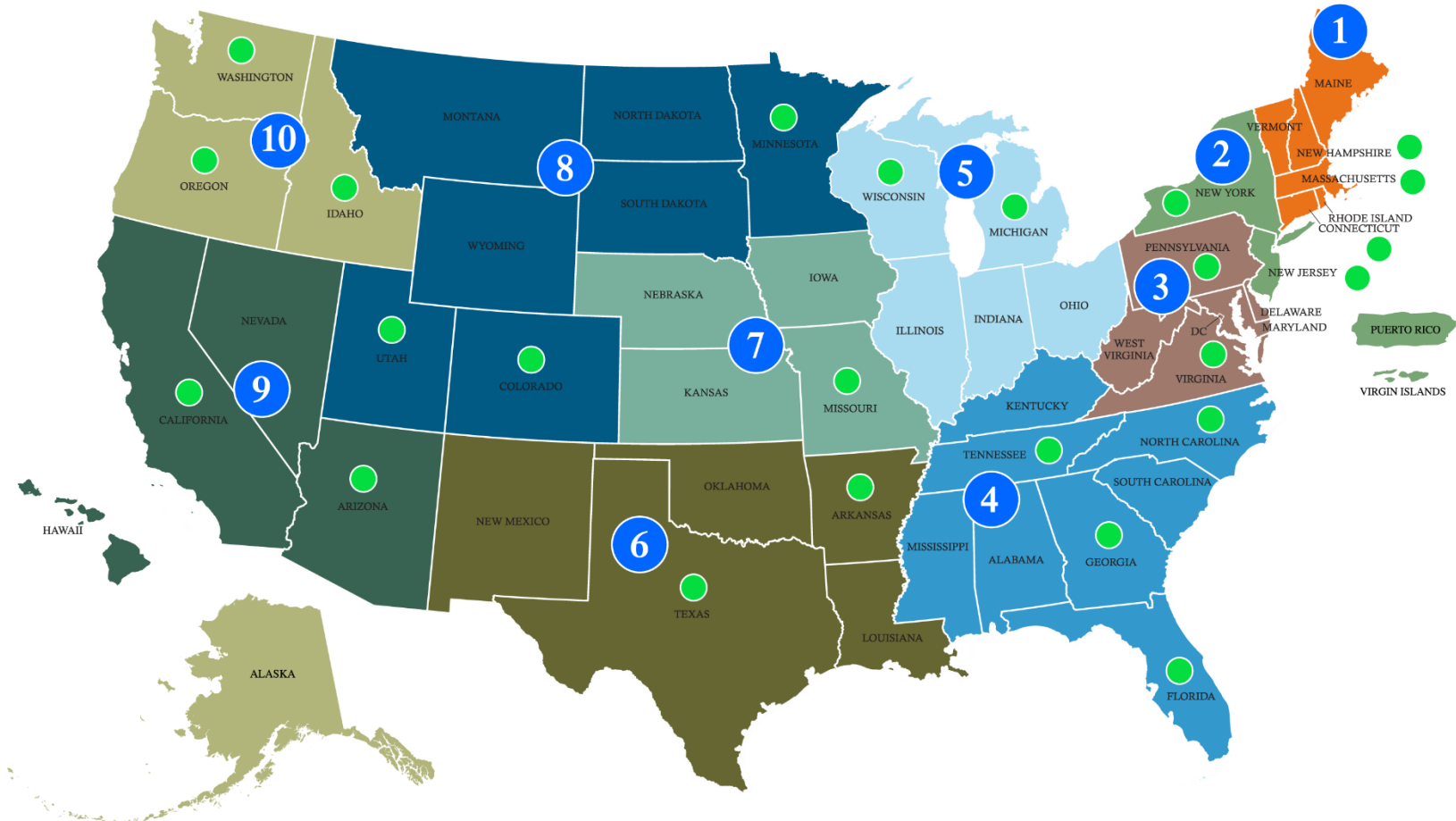


# Environmental Experts in the Field



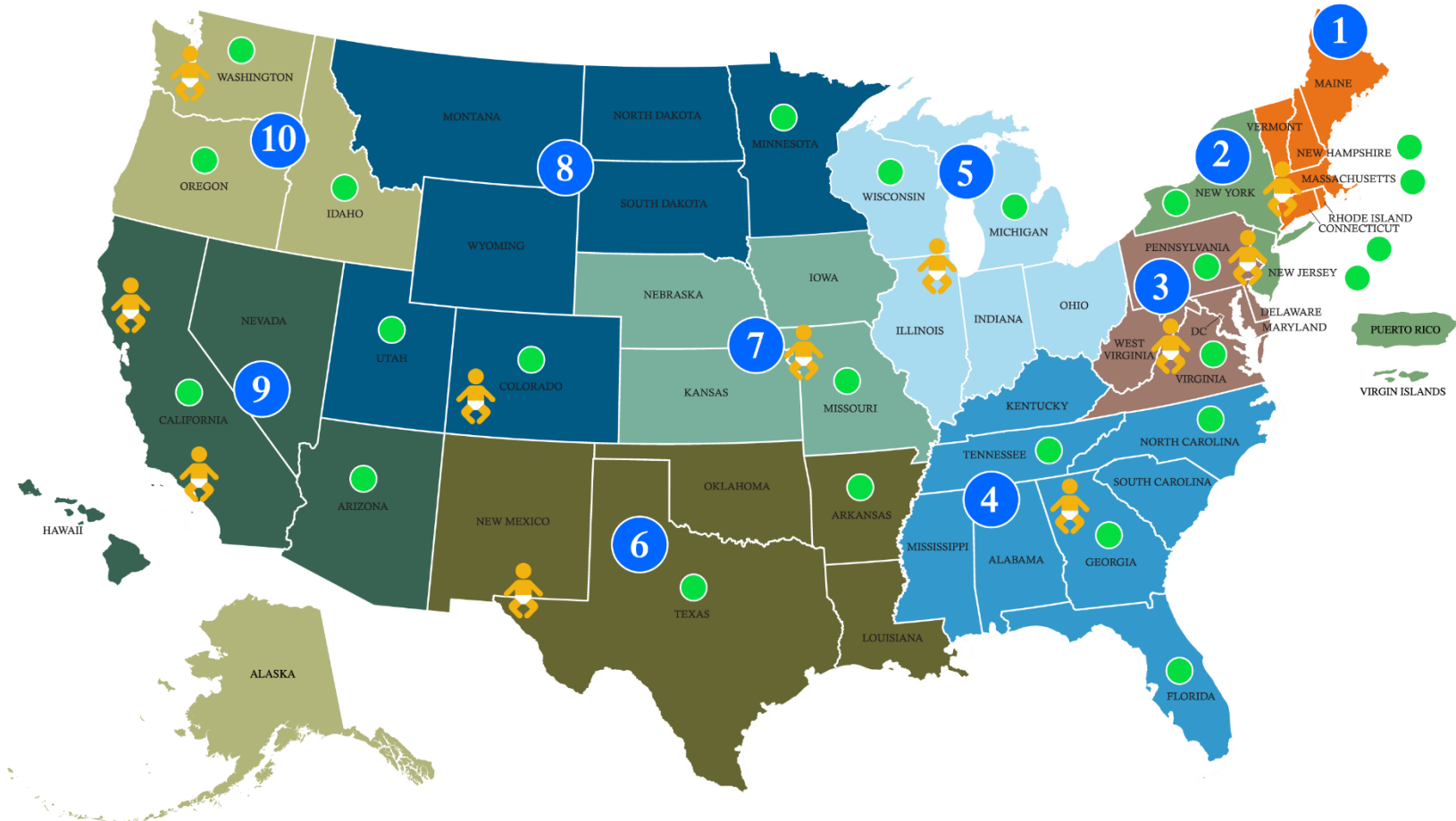
● ATSDR Regional Offices

# Environmental Experts in the Field



● ATSDR Regional Offices    ● States Funded by Cooperative Agreement

# Environmental Experts in the Field



● ATSDR Regional Offices   ● States Funded by Cooperative Agreement   ● Pediatric Environmental Health Specialty Units (PEHSUs)

# 10 Regional Offices



- Talk with local residents, community organizations, and health care providers
- Work closely with EPA staff and other key partners
- Travel quickly to emergencies

Contact your regional office: [http://www.atsdr.cdc.gov/DRO/dro\\_org.html](http://www.atsdr.cdc.gov/DRO/dro_org.html)

# 25 State Cooperative Agreement Partners



- Evaluate health risks at hazardous waste sites
- Educate community members and health care providers

**Contact your State Program:**

<http://www.atsdr.cdc.gov/states/>

# 11 Pediatric Environmental Health Specialty Units



## **PEHSU:**

A national system of academically based medical experts available to respond to concerns about children's environmental health

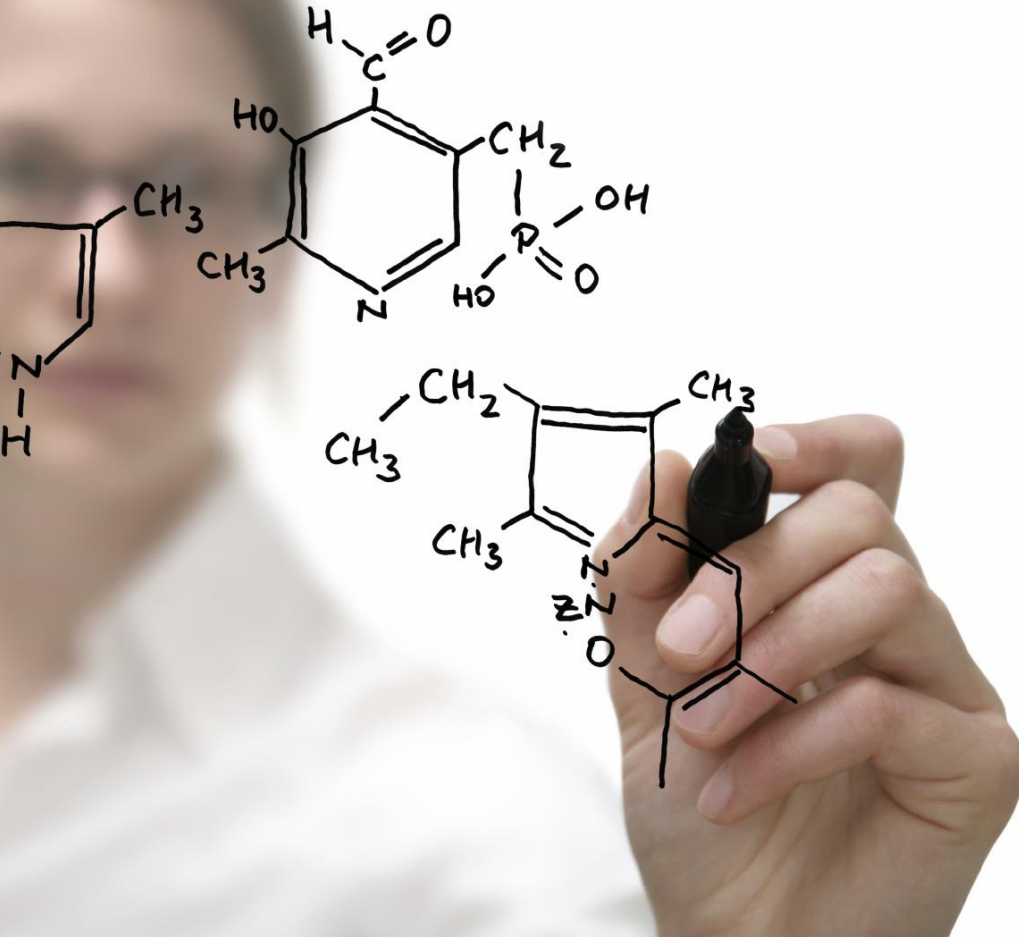
## **Services:**

- Community Education and Outreach in coordination with ATSDR
- Training Health Professionals
- Consultation and Referral

**Contact your nearest PEHSU:**

<http://www.pehsu.net/serviceareas.html>

# Information on Chemicals in your Community



## ToxProfiles™ and ToxFAQs™

- 173 ToxProfiles™ covering 350 substances
- High level companion factsheets (ToxFAQs™) available in multiple languages

Find a ToxFAQ at:

<http://www.atsdr.cdc.gov/toxfaqs/index.asp>